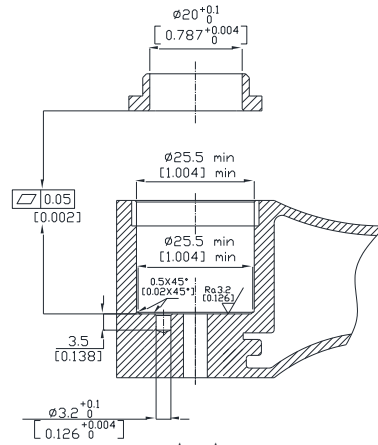
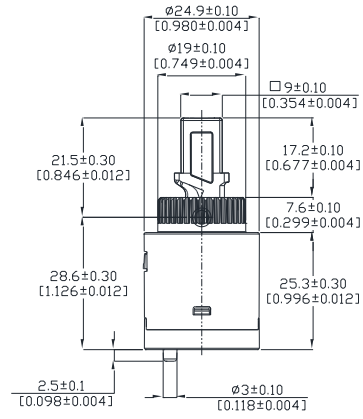
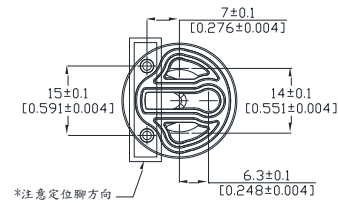


技術指標參數 Technical data		產品型號：K25OSS (25mm 反向閥芯)																								
最高使用溫度 Max.temperature	90°C	迫緊上蓋鎖值 Tightening torque			7~8 N.m																					
開啟角度 Open angle	22°	旋轉角度 Rotary angle			90°																					
水壓流量表 Relation between pressure and flow rate		<table border="1"> <caption>Data for Relation between pressure and flow rate</caption> <thead> <tr> <th>Pressure (Bar)</th> <th>Average flow rate (L/min)</th> </tr> </thead> <tbody> <tr><td>0.1</td><td>1.6</td></tr> <tr><td>0.3</td><td>3.3</td></tr> <tr><td>0.5</td><td>4.2</td></tr> <tr><td>1</td><td>5.9</td></tr> <tr><td>2</td><td>8.6</td></tr> <tr><td>3</td><td>10.6</td></tr> <tr><td>4</td><td>12.2</td></tr> <tr><td>5</td><td>13.5</td></tr> </tbody> </table>							Pressure (Bar)	Average flow rate (L/min)	0.1	1.6	0.3	3.3	0.5	4.2	1	5.9	2	8.6	3	10.6	4	12.2	5	13.5
Pressure (Bar)	Average flow rate (L/min)																									
0.1	1.6																									
0.3	3.3																									
0.5	4.2																									
1	5.9																									
2	8.6																									
3	10.6																									
4	12.2																									
5	13.5																									
壓力 Pressure	0.1bar	0.3bar	0.5bar	1bar	2bar	3bar	4bar	5bar																		
流量平均值 L/min (無起泡頭) Average flow rate (Free flow)	1.6	3.3	4.2	5.9	8.6	10.6	12.2	13.5																		
測試項目 Performance test																										
扭力測試 Torque test (N.m) (壽命測試前) (Before Life cycle test)	轉左-右 Turn left-right (N.m)			開-關 Open-close (N.m)																						
	0.05-0.55			0.05-0.55																						
密封測試 Sealing test	靜壓 Static pressure	氣壓 Air pressure		6±1 bar																						
		水壓 Water pressure		35 bar																						
	靜壓爆破 Burst test			70 bar																						
壽命測試 Life test	EN817-70,000 cycles / ASME-500,000 cycles																									

以上測試為 KCG 自製龍頭 . The testing faucet is designed by KCG.



A-A

